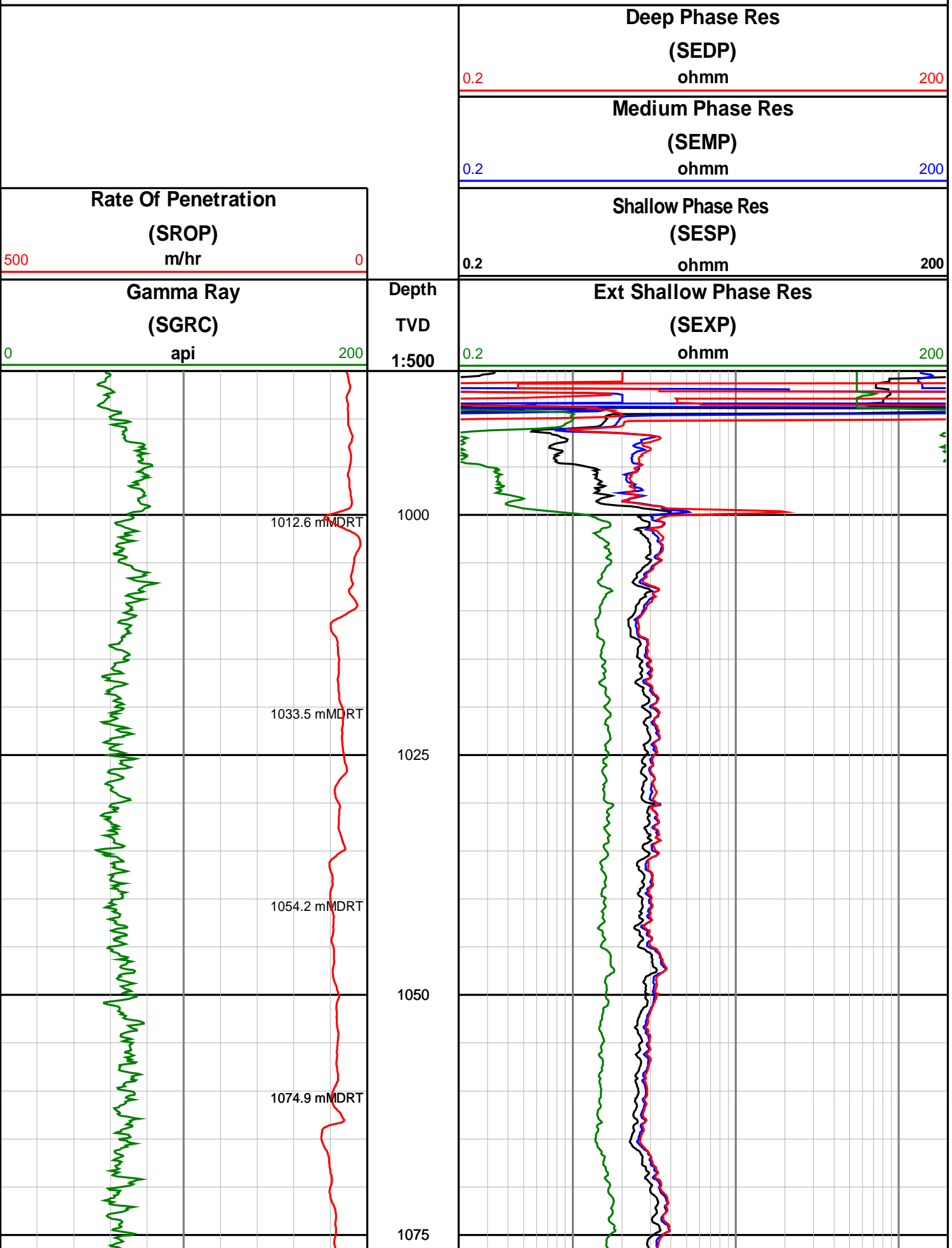
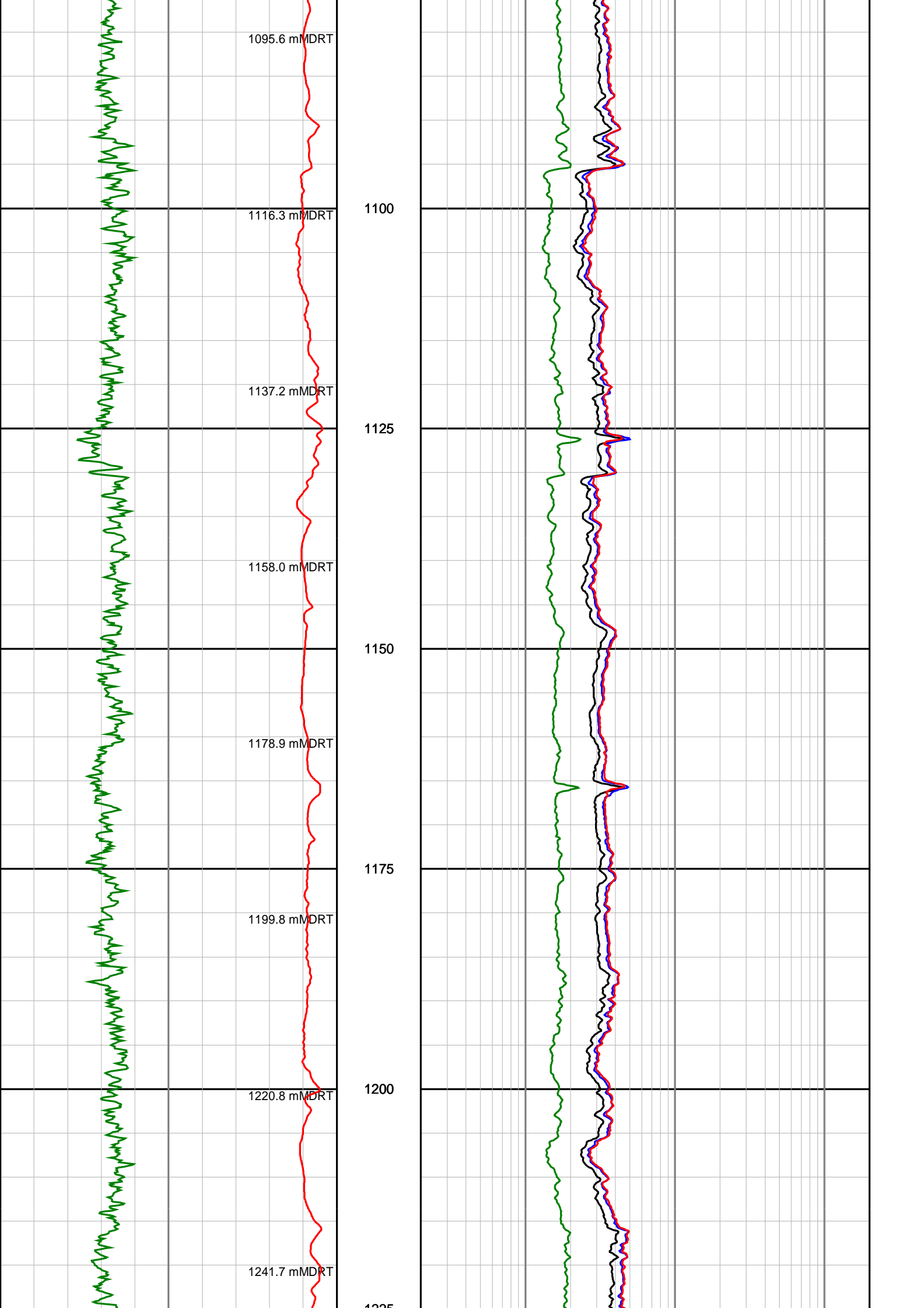


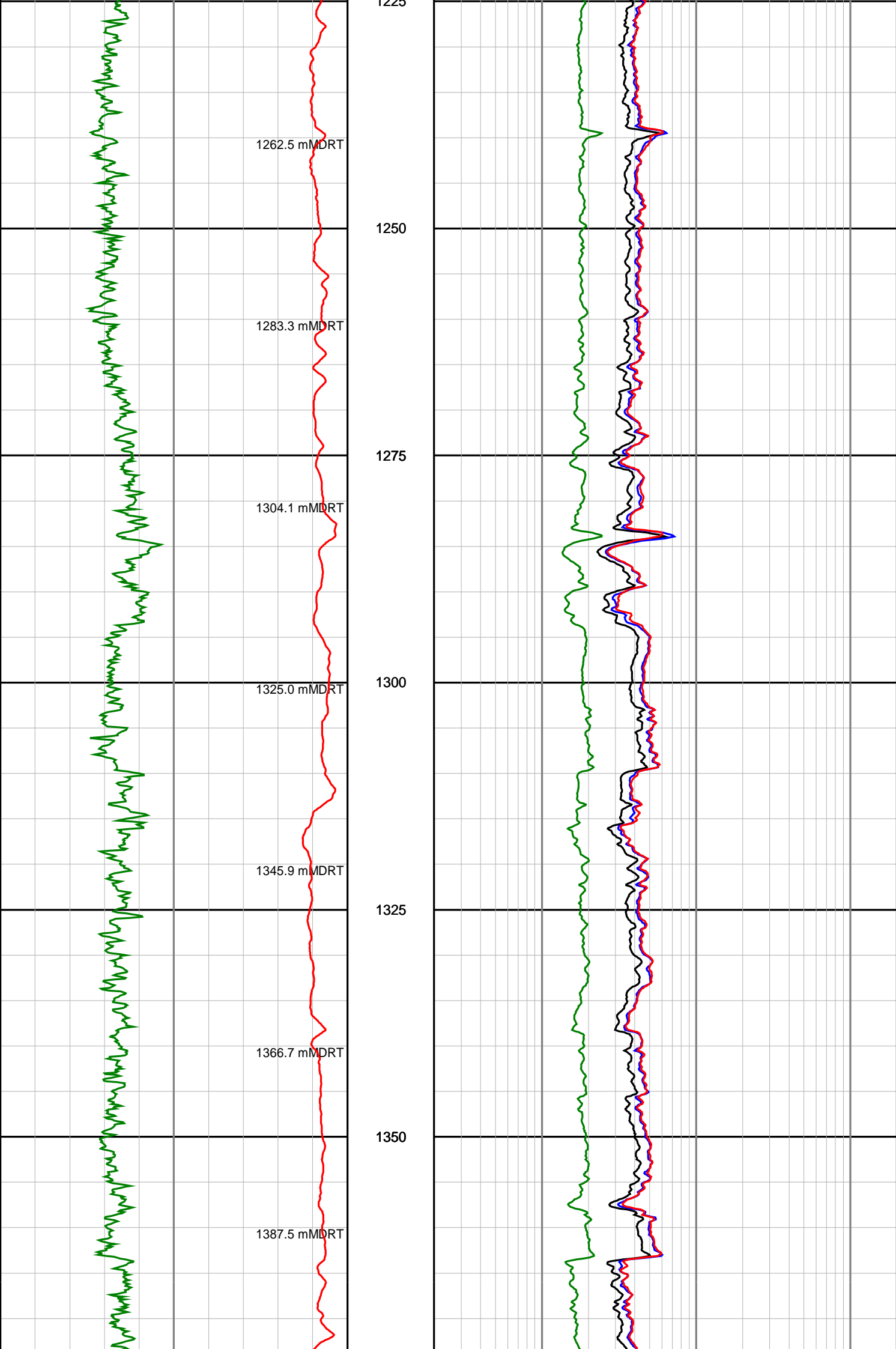
Anzon Australia Ltd

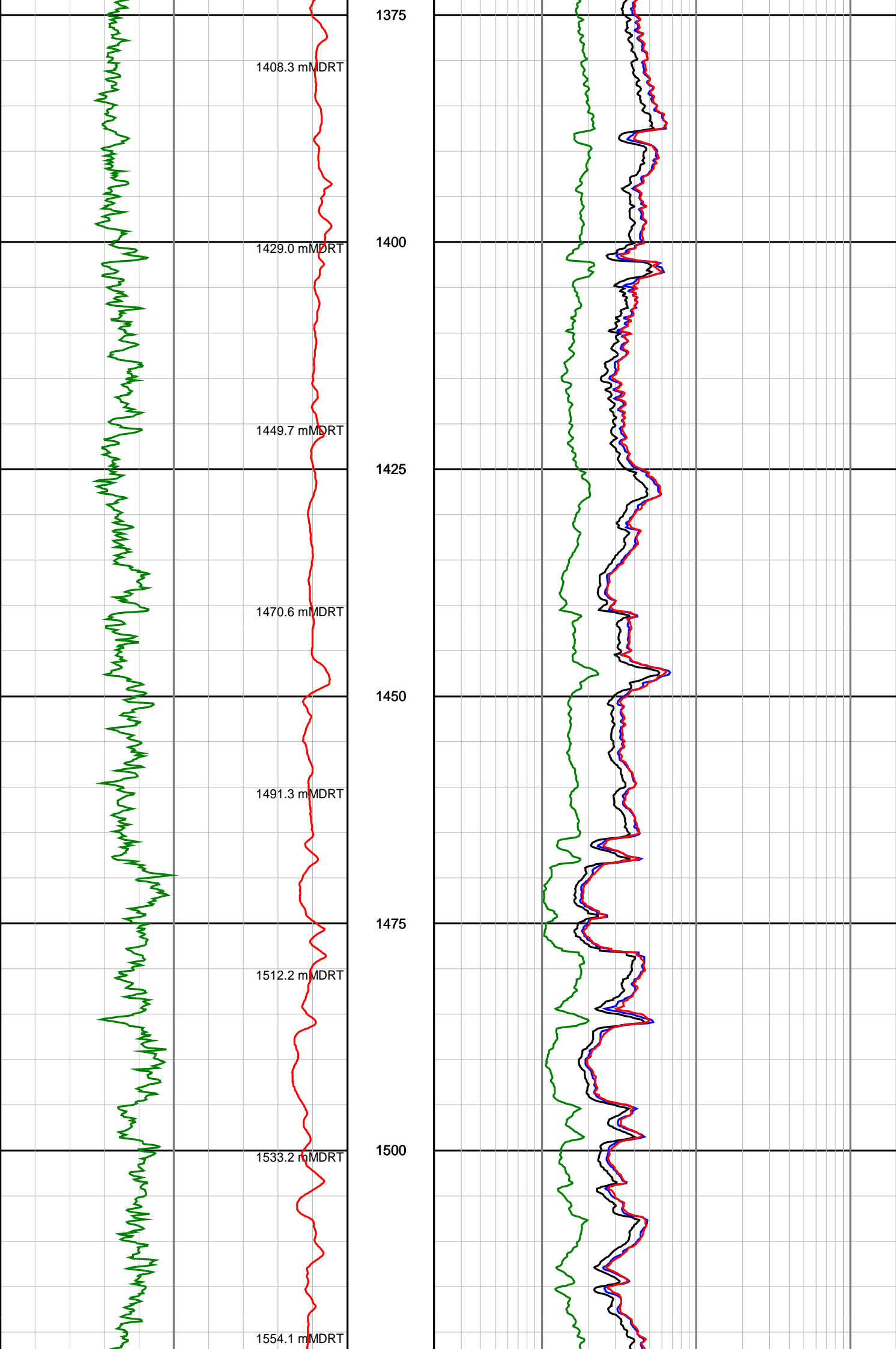
Basker-5

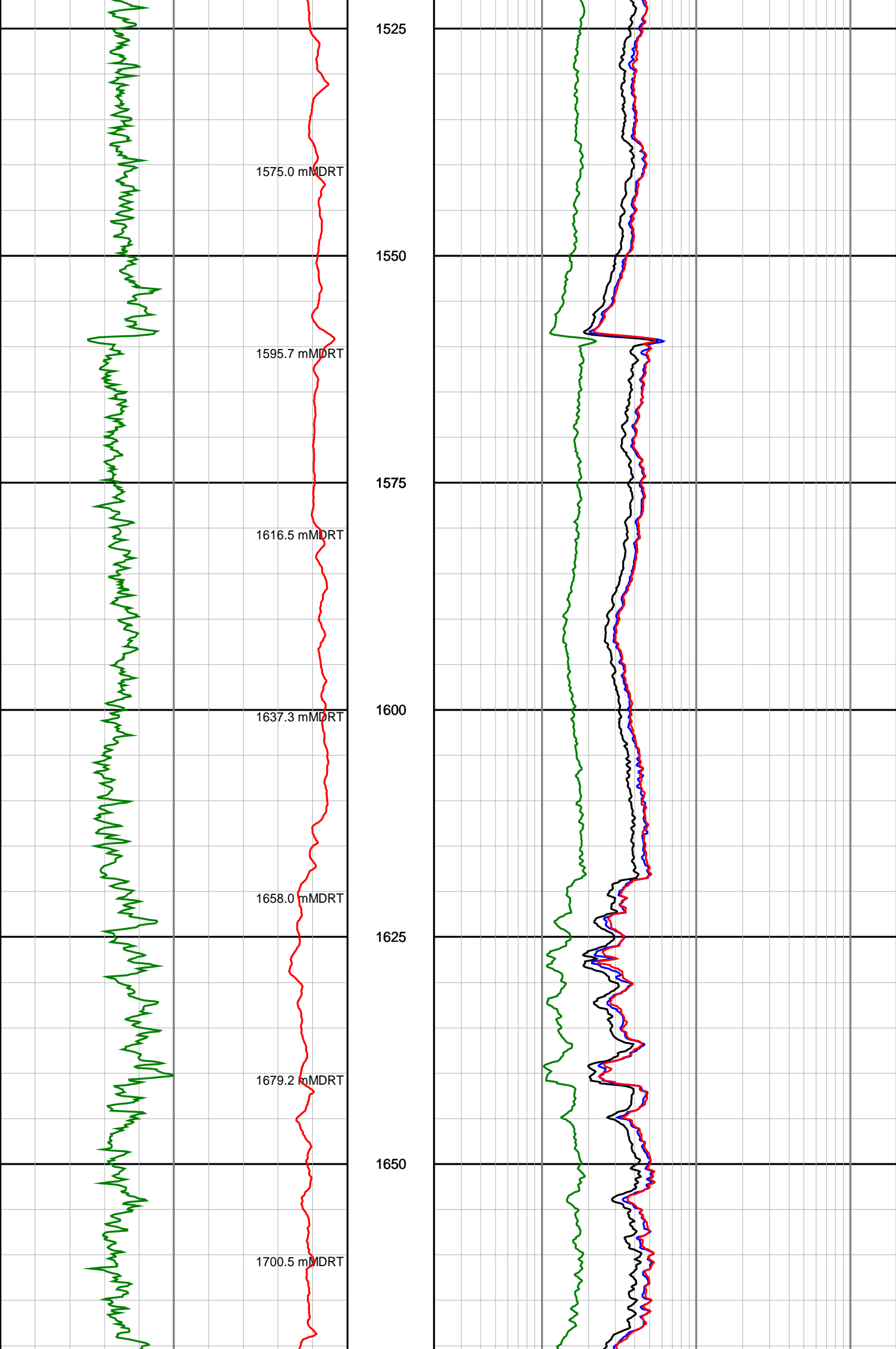
Recorded LWD Log (Permanent Datum - LAT)

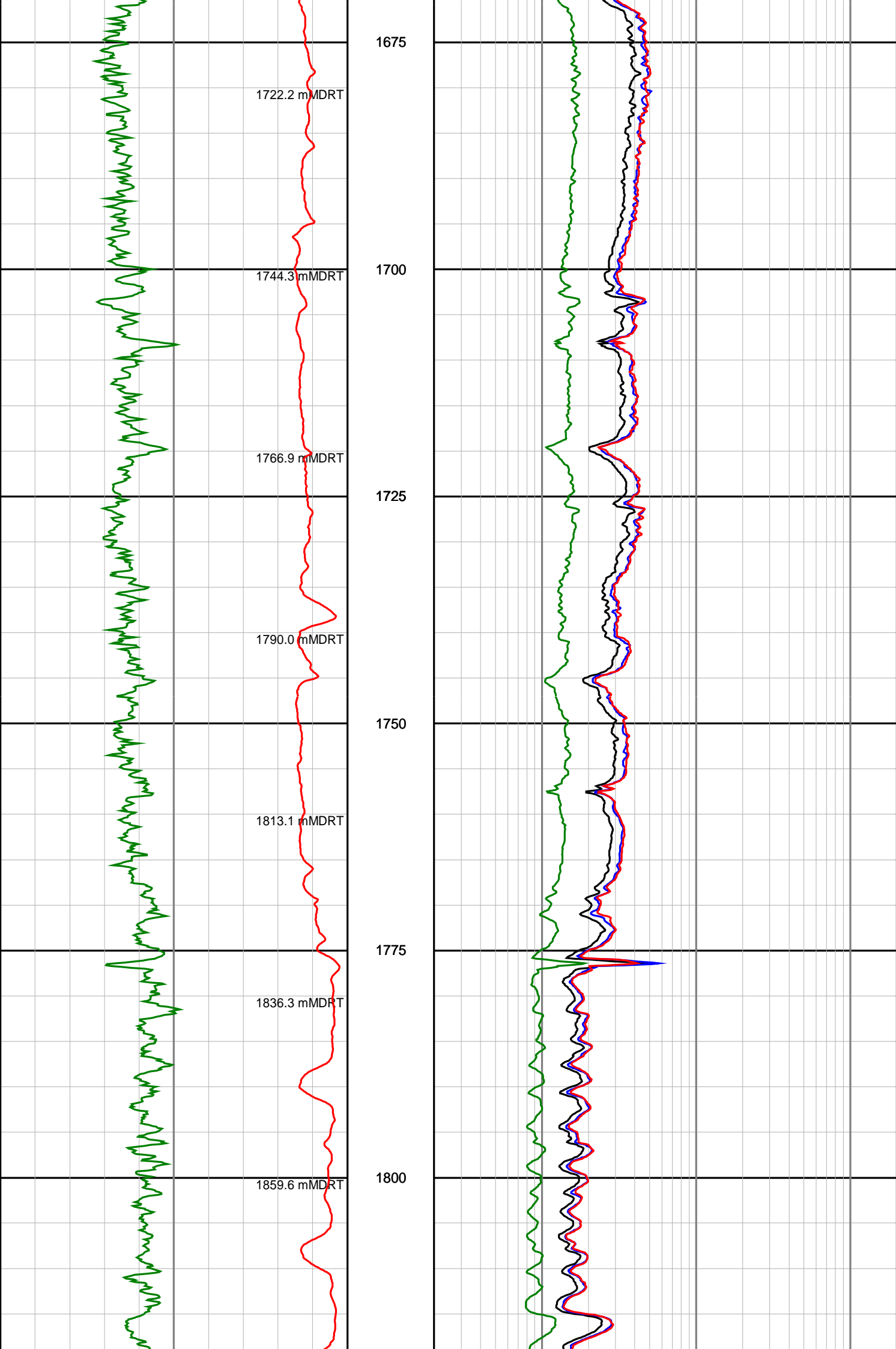


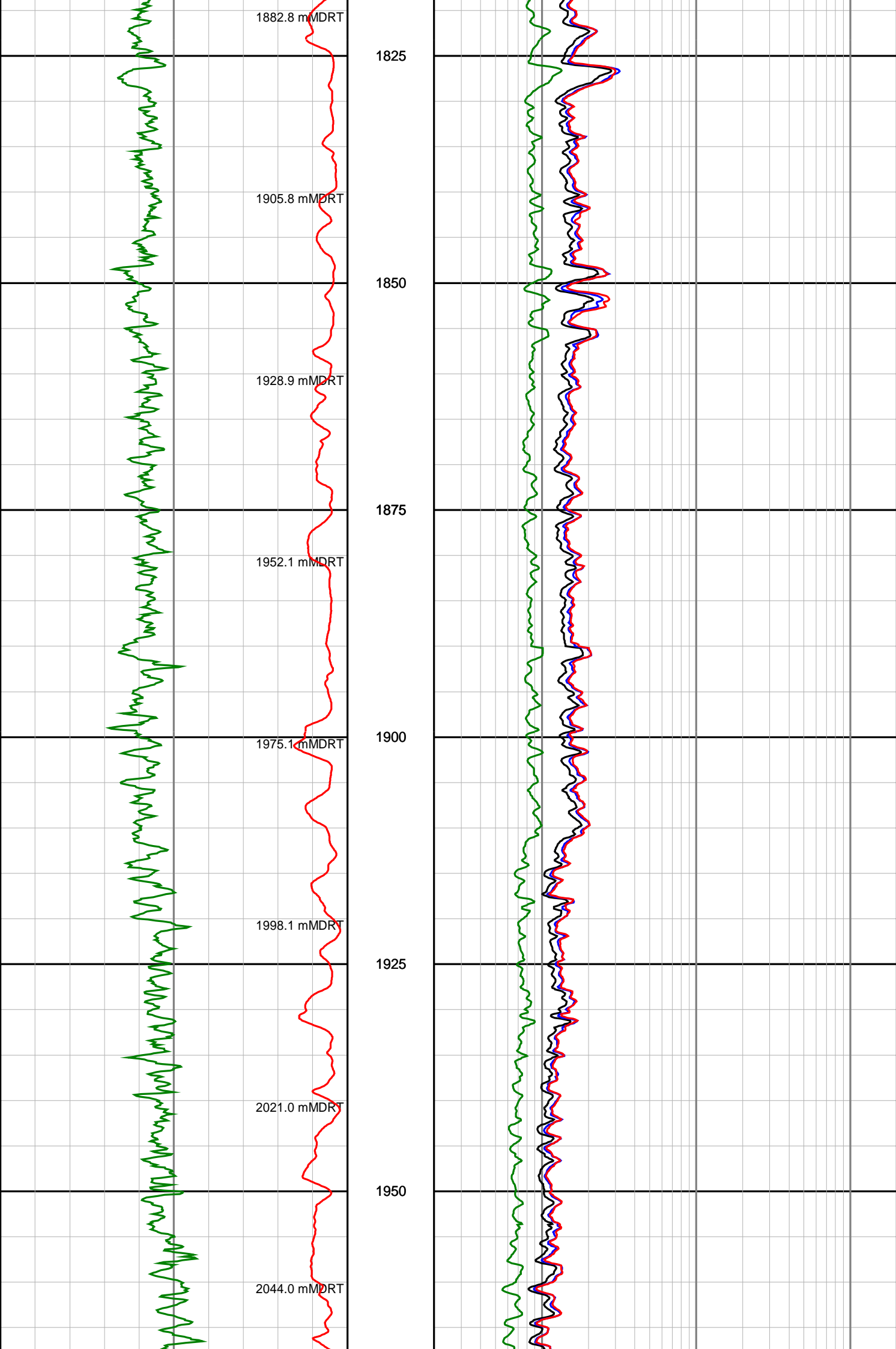


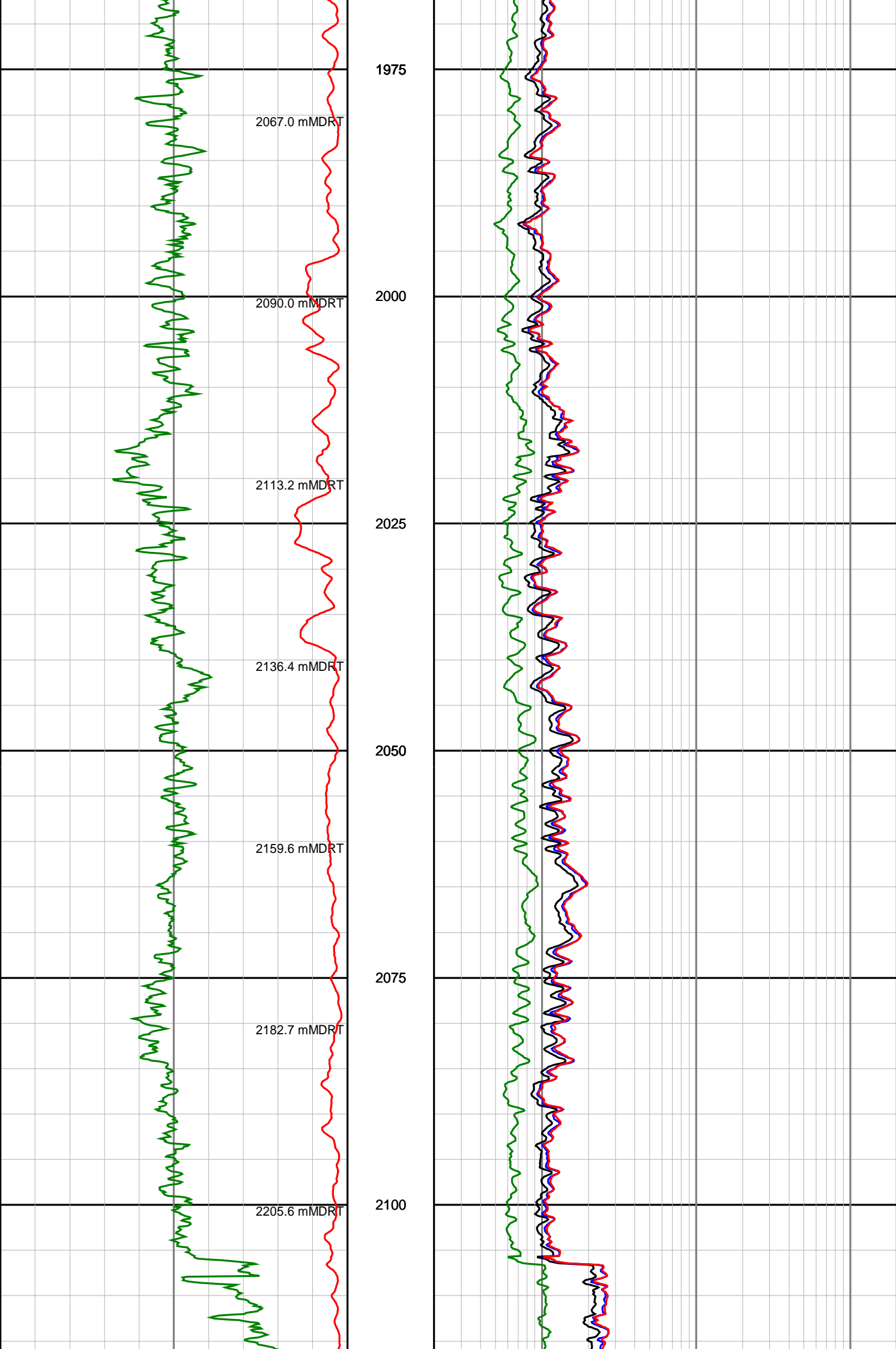


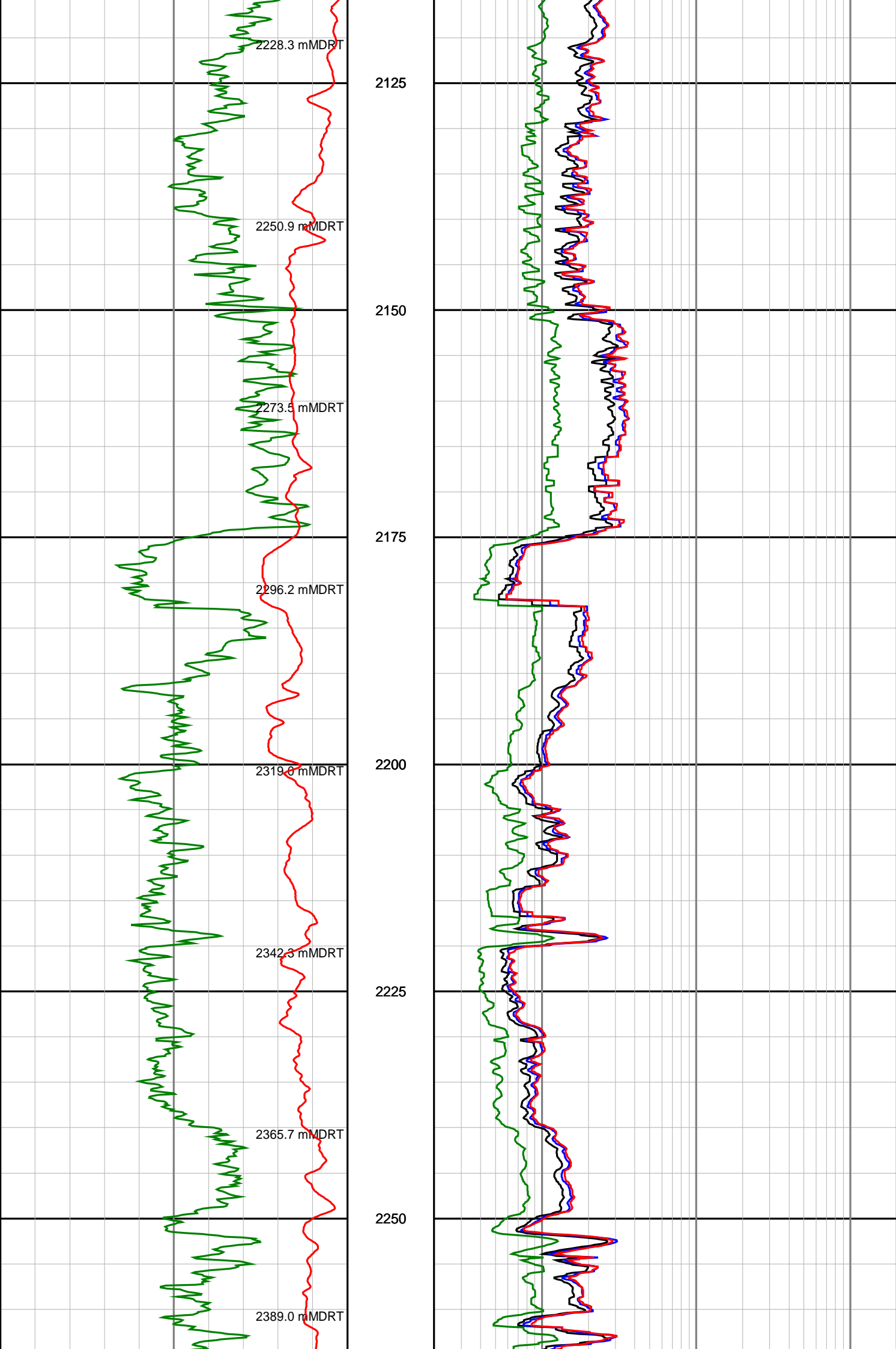


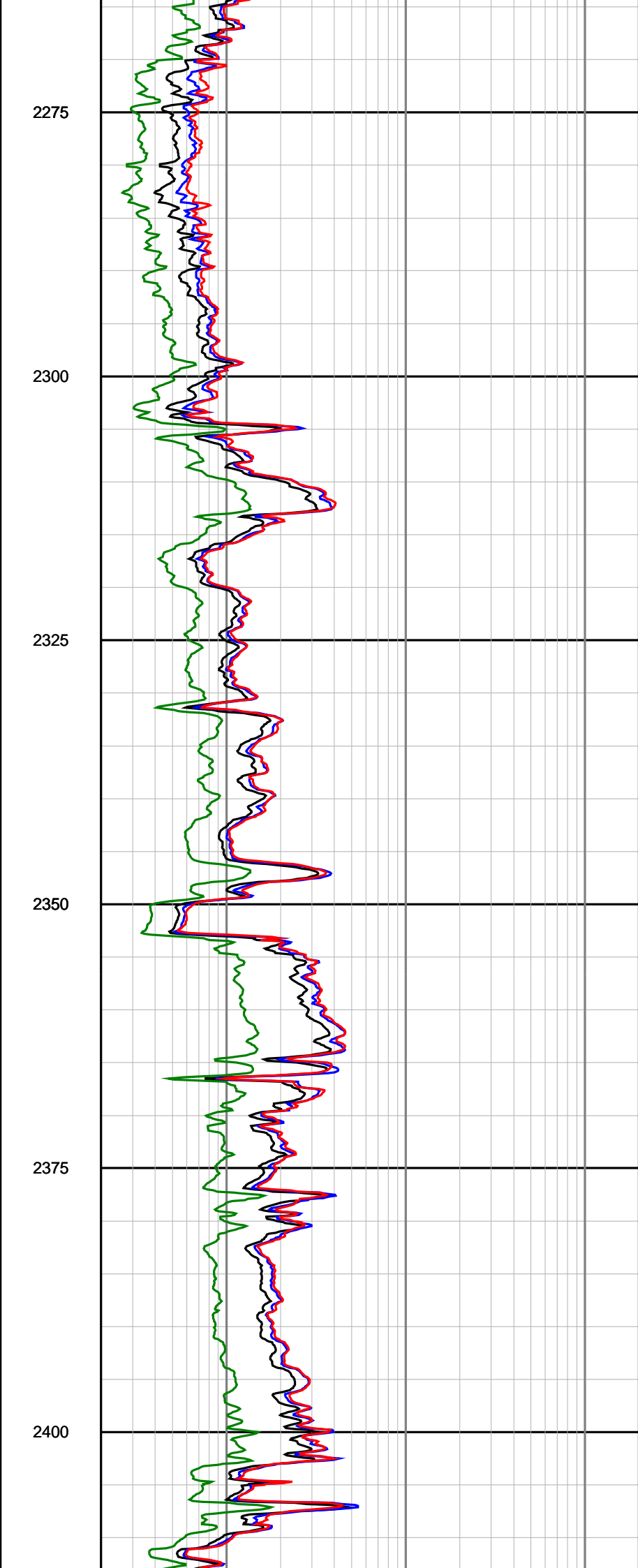
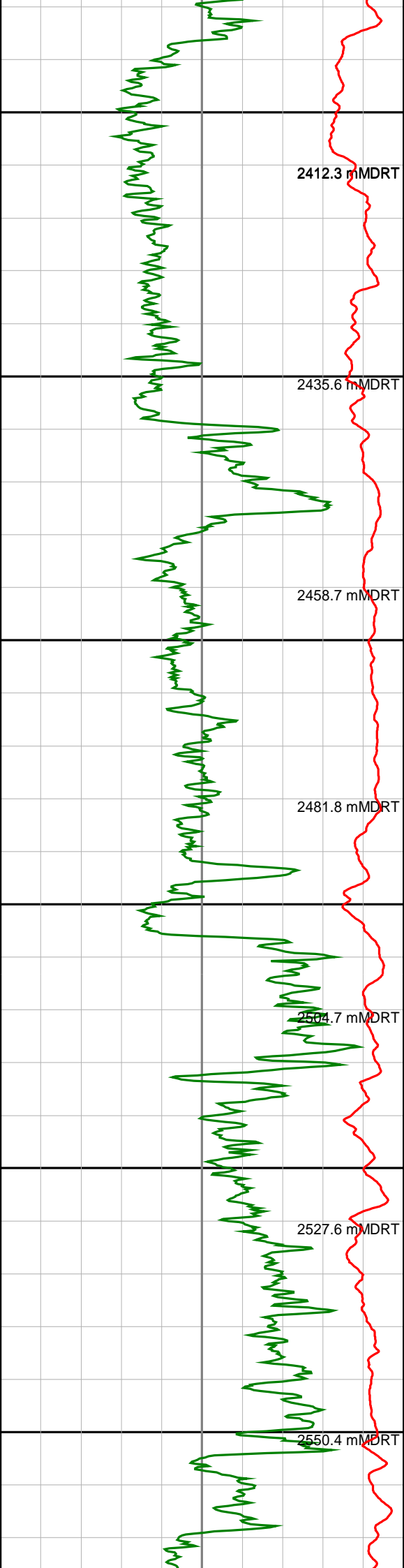


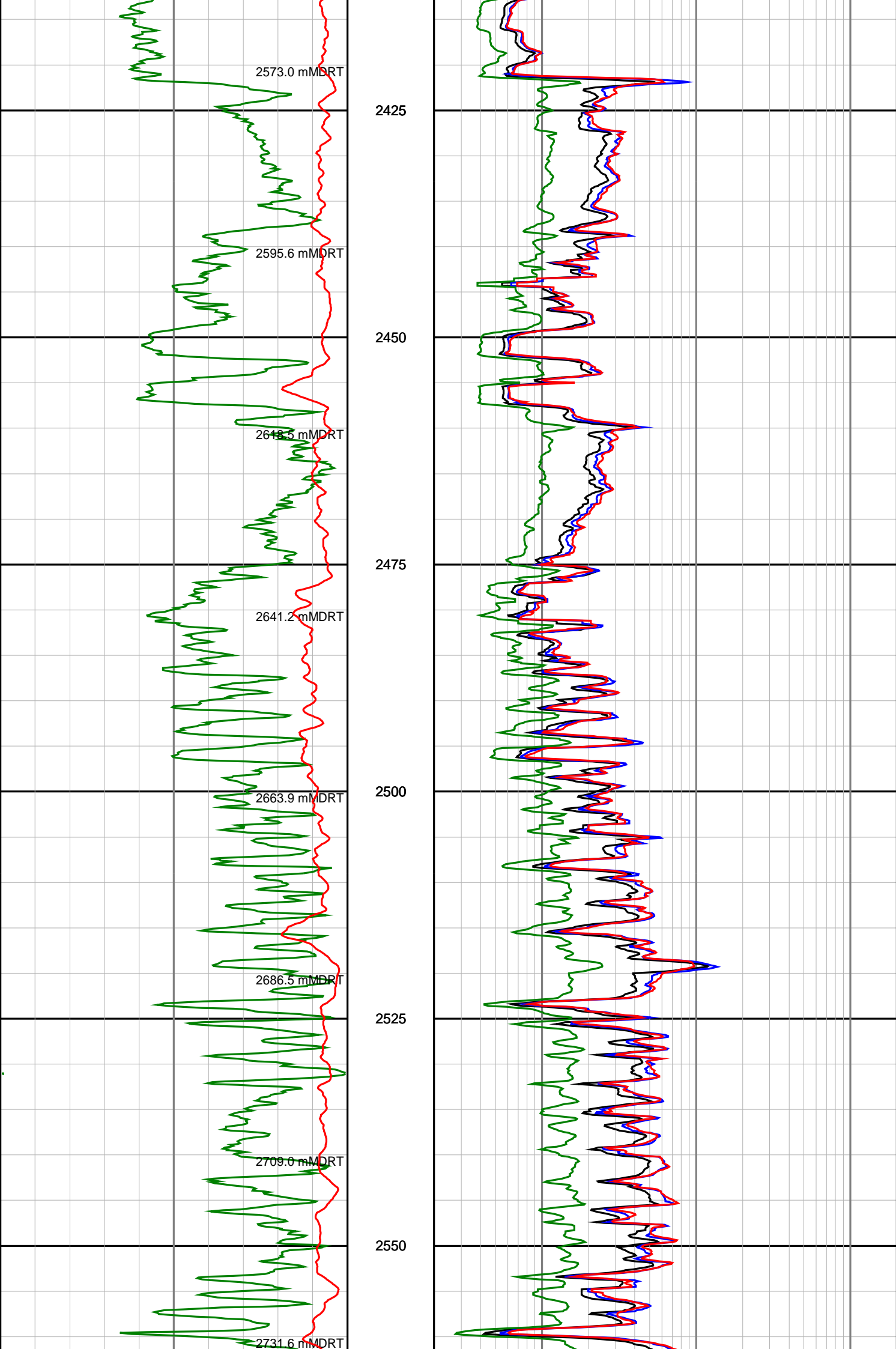


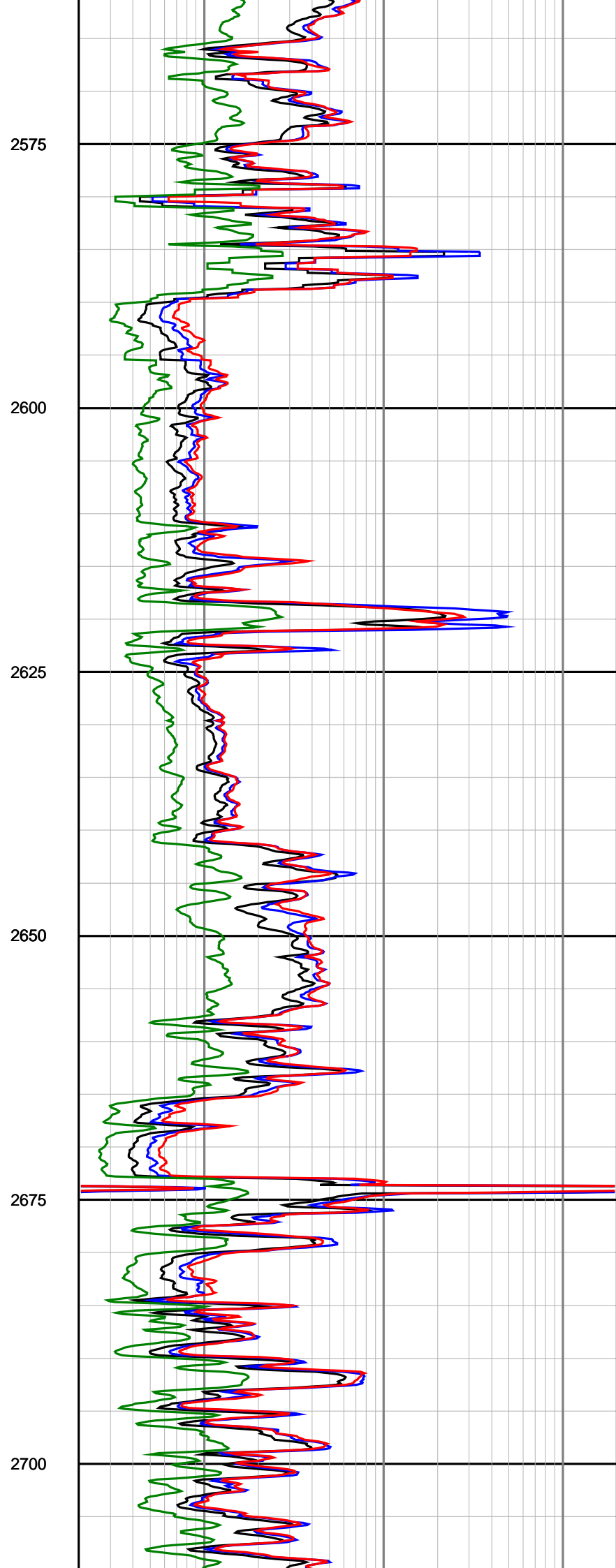
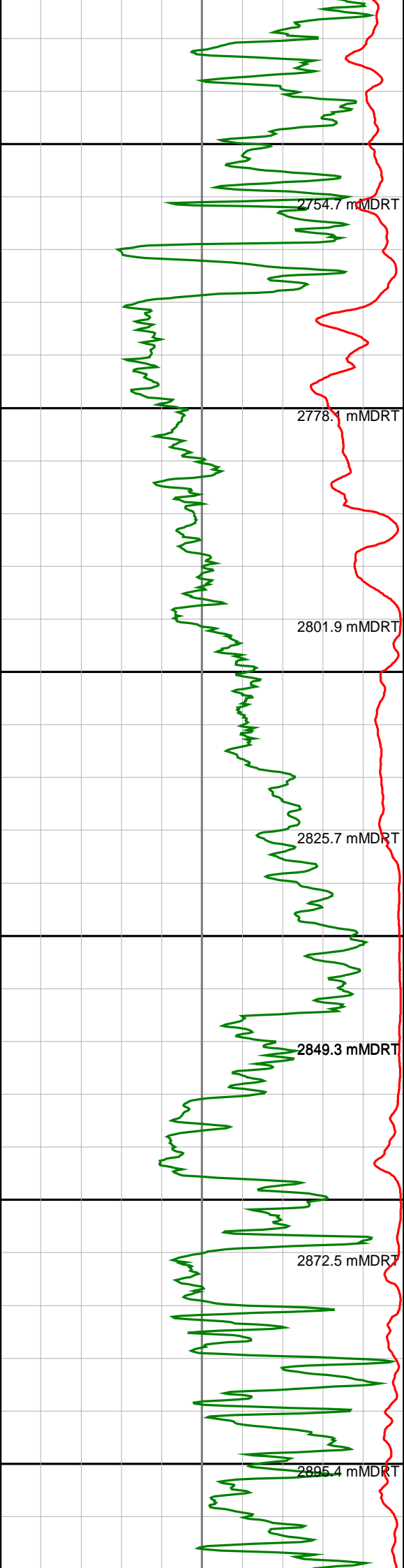


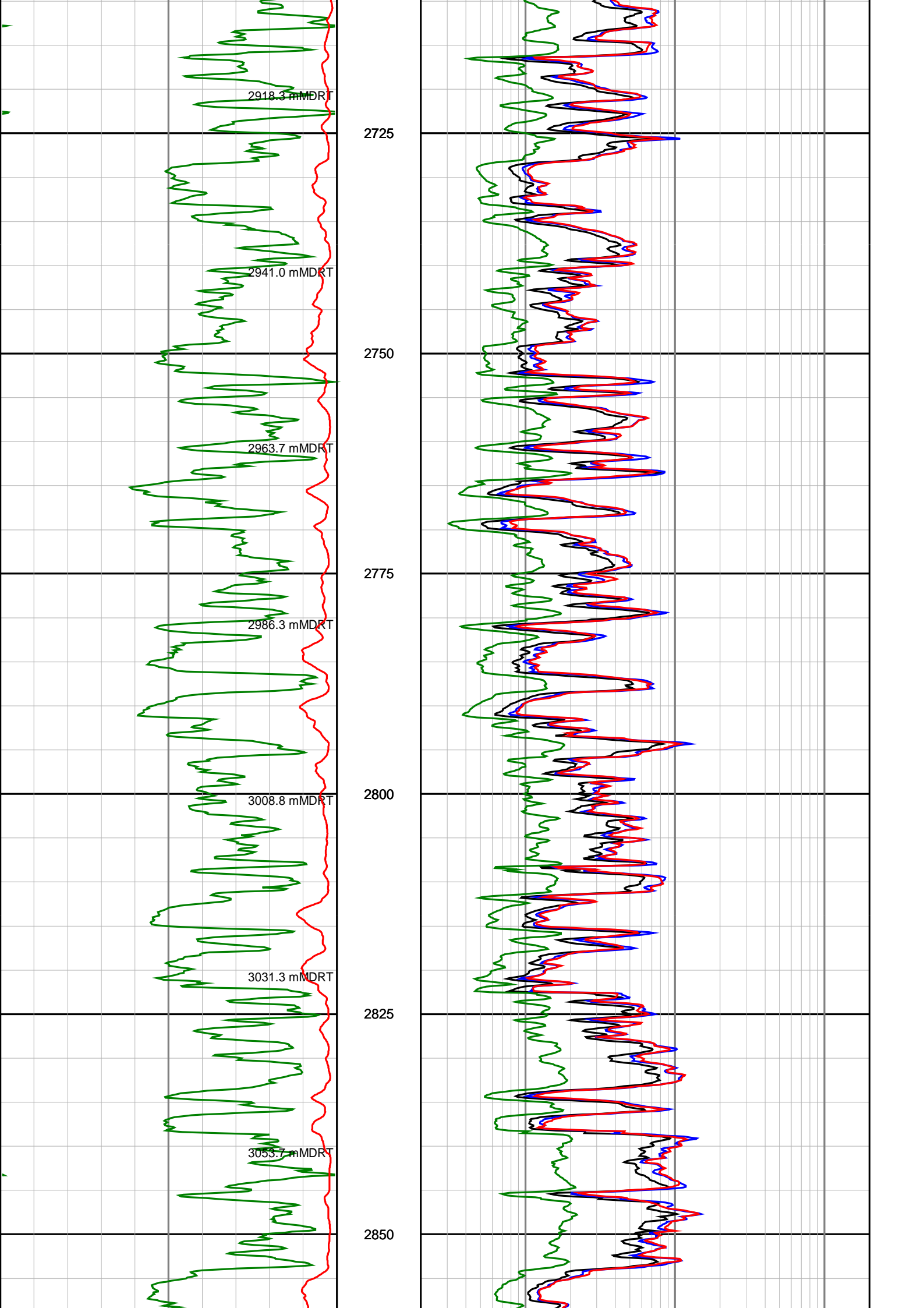


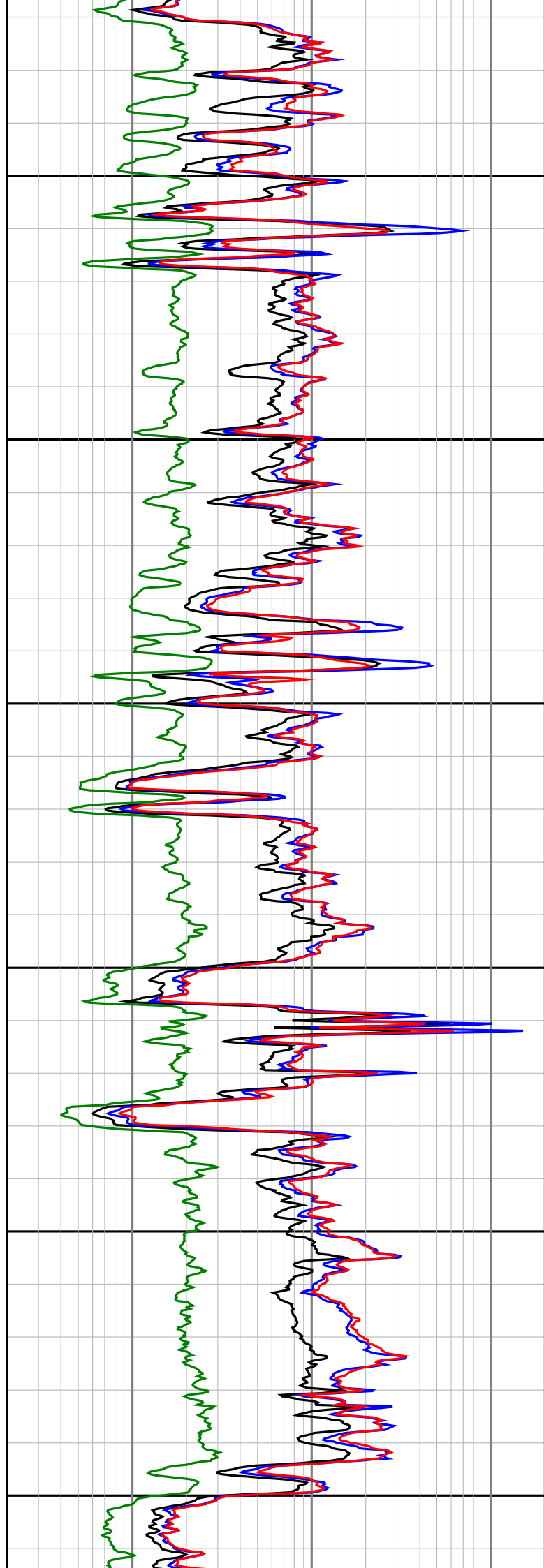
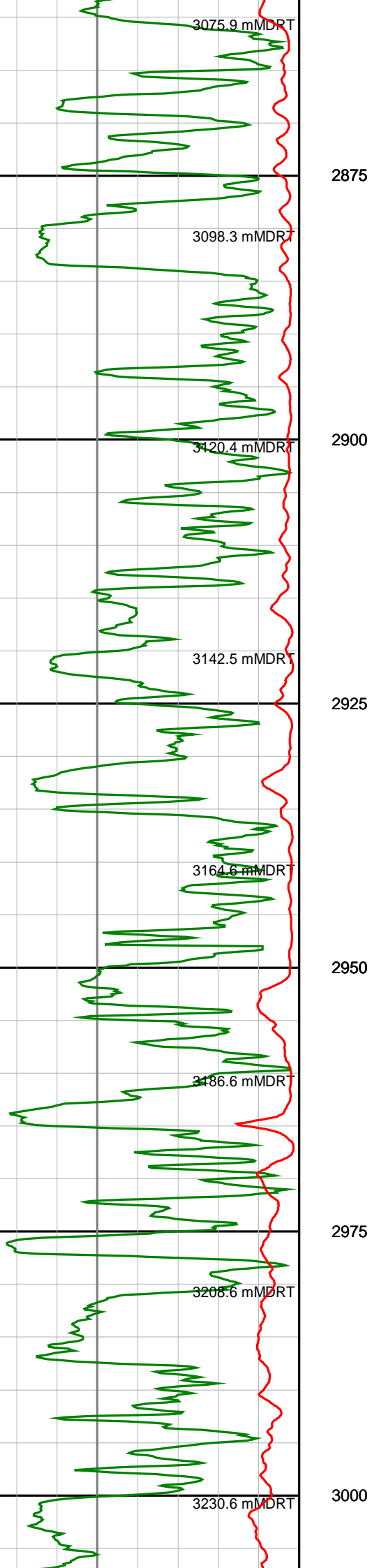


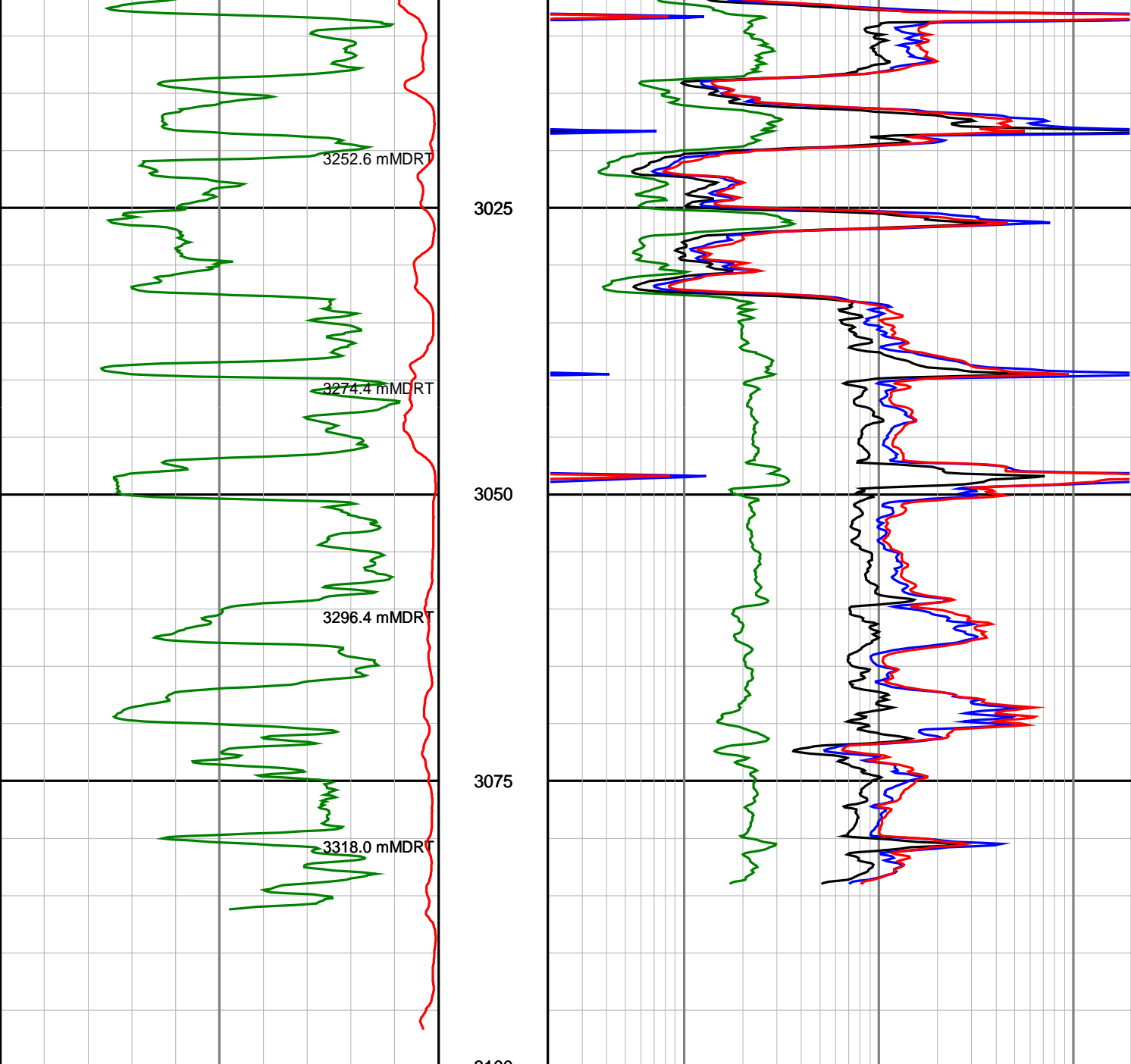












**Gamma Ray
(SGRC)**

api

200

**Rate Of Penetration
(SROP)**

m/hr

500

0

3100
Depth
TVD
1:500

**Ext Shallow Phase Res
(SEXP)**

ohmm

200

**Shallow Phase Res
(SESP)**

ohmm

200

**Medium Phase Res
(SEMP)**

ohmm

200

**Deep Phase Res
(SEDP)**

ohmm

200